



**SHARE
FOUNDATION**
Fundación SHARE

2020 ANNUAL REPORT



<http://www.share-elsalvador.org>

Message from the Executive Director

40 YEARS WORKING IN EL SALVADOR AND 11 HONDURAS

Vision:

To transform society, SHARE increases the capacity of organized communities and their partners through our model of mutual accompaniment.

Mission:

SHARE Strengthens solidarity with and among the Salvadoran people in El Salvador and the United States in the struggle for economic sustainability, justice and human and civil rights

SHARE PROGRAMS:

- Community Development
- Advocacy
- Grassroots

Dear Sisters and Brothers,

2020 marked the 40th anniversary of the martyrdom of San Romero and Ita, Maura, Dorothy and Jean.

Due to Covid 19 global pandemic, SHARE was compelled to cancel our delegations to El Salvador, including the December 2nd delegation, which normally includes more than 120 delegates. But we remained undaunted. Instead of delegations, SHARE, in partnership with the Leadership Conference of Women Religious, (LCWR), organized 40 events across the US, El Salvador, England and Rome!

Working with our many partners, we mastered zoom and held beautiful and creative virtual events with music, dance, poetry and countless testimonies remembering our beloved sisters. We are deeply grateful to all who helped organize the 40th anniversary celebrations of our sisters. Thank you!

As we remember our beloved sisters, during 2020 we brought to life the dreams of the communities to whom they dedicated their lives. In collaboration with the Sisters of Charity Halifax Canada, and the women of CCR, SHARE completed a water project in Chalatenango that benefits more than 700 families. SHARE continues to be part of the struggle to make water a human right, supporting El Foro del Agua to advance legislation and a national Water Law.

En solidaridad,

Locke Schultz Jaeger, Board President
Jose Artiga, Executive Director
Isabel Hernandez, El Salvador Director

From the window at our office in Berkeley we experience the ashes of the severe fires sweeping California, a direct result of climate change and the severe drought, heat, and wind storms. At the same time communities we work with in El Salvador and Honduras are also suffering from climate change and its consequences, including the Amanda Storm and Hurricanes Eta and Iota that have devastated so many and pushed so many families from their homes.

In Honduras, our sister communities and institutional partners including the Mercy Sisters, the School Sisters of Notre Dame and the Jesuit Radio Progreso, reported that the hurricanes came on top of the Covid-19 pandemic and the repression suffered under the corrupt government of Juan Orlando Hernandez. The multiple crises have dislocated thousands of people, forcing them to undertake the perilous trek to the US.

Throughout 2020, SHARE was blessed with thousands of donations in response to the Covid-19 pandemic in El Salvador and Honduras, allowing us to provide PPE to healthcare providers and emergency support. In the same way we were able to channel emergency aid to communities in El Salvador, Honduras and Nicaragua affected by Amanda, Eta and Iota.

This was a challenging year, but we endured with your faithful support.

Words cannot adequately capture our profound gratitude for each and every one of you who generously contributed. Your love and solidarity make all the difference.

MAIN ACHIEVEMENTS OF 2020

1. Successfully respond to the emergencies in El Salvador and Honduras: hurricane ETA and Iota.
2. Provide PPE to communities in El Salvador including first response personnel.
3. Advance water project for communities in Chalatenango including building a coalition to contribute the over \$200,000 cost of the project.
4. Accompany partner organizations in Honduras to support communities in defending human rights and responding to emergencies.

Supporting the Leadership and Capacity Development of Youth



We begin 2021 by giving thanks because we have managed to survive and accompany the most vulnerable families affected by storms Amanda and IOTA, and by the COVID-19 pandemic.

2020 has been a difficult year, since March we have been facing the COVID-19 pandemic worldwide.

In our country, according to official data, we have had more than 1,400 deaths and more than 50,000 infected people, but according to unofficial data from the municipalities, more than 7,000 people have been buried in municipal cemeteries with the COVID protocol.

In addition to the health effects, the economic effects are large, more than 100,000 jobs have been lost, poverty, hunger and unemployment have increased.

In the middle of the pandemic, the country was severely affected by the storms, Amanda, Cristobal, ETA and

IOTA, leaving hundreds of families affected with serious damage to their homes, loss of property and also psychological effects.

It is important to note that both the pandemic and the storms and hurricanes were hard tests that have left human and material losses, but they did not demobilize us, on the contrary, new forms and methods of communication with members and donors were created, which It allowed us to provide an immediate response to the needs generated by emergencies.

A special thanks to all the institutions and people who have accompanied the affected communities in solidarity, either with their prayers, with solidarity and financial support that has allowed us to carry out our contribution in a timely manner to alleviate some of the needs of the affected families.

We hope that you will continue to accompany us in this fight in favor of the poorest families.

In the regions of Chalatenango, south of La Libertad and north of San Salvador through our partners: Cripdes Sur, UCRES and CCR.

We continued to support 20 young people with university scholarships, of which three graduated.

The young people were trained in community organization, leadership, sexual and reproductive education and a gender approach. 20 young people were supported with scholarships for high school studies, of which five graduated and one in technical studies.

Leadership and youth participation has been strengthened in community organization and in advocacy spaces for projects for young people.

With the covid-19 pandemic, there were difficulties for young people to receive their classes since most do not have internet access, the classes were online.

Folk Dance



Four groups of folk dance were supported with training on folk dance the provision of typical costumes, and a peace band.

Most Affected



During the COVID-19 pandemic, a virtual campaign on violence prevention was promoted, since due to confinement there was an increase in cases of domestic violence, where women were the most affected.

Working with women



At least 300 women received support with seeds and seedlings, they were also trained in the management of family gardens, in the areas of land preparation, preparation of fertilizers and organic pesticides, such as planting vegetables, in pest control, among others.

CCR followed up on the training school on women's rights, processing of medicinal plants and the rescue of ancestral culture, where 30 women leaders were trained.



20 young people were trained on the management of organic gardens and were supported with inputs for the implementation of their garden.



In the framework of the COVID-19 pandemic, a virtual campaign on violence prevention was promoted, since due to confinement there was an increase in cases of domestic violence, where women were the most affected.



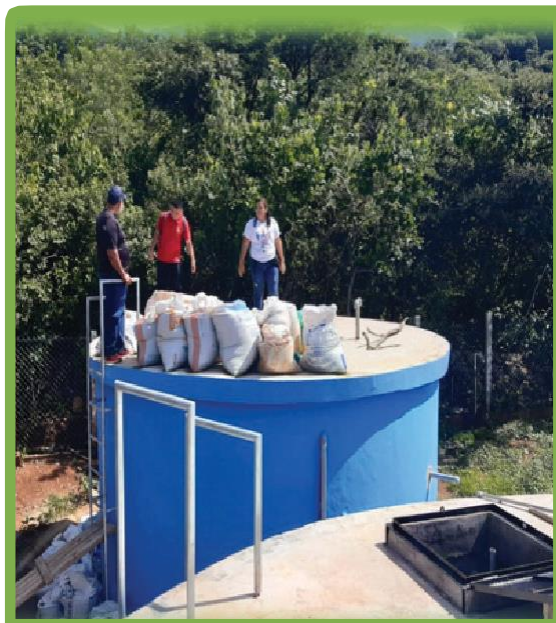
The creation of small economic initiatives was encouraged for a group of women from Comasagua, La Libertad, with training and a seed fund for an enterprise to manufacture and commercialize jellies and pickles.

Human Rights and Historical Memory



We have supported the attorneys of Tutela Legal, to follow up on the case of the judicial process against the murderers of the Mozote massacre in Morazán and the massacre in the Sumpul river in Chalatenango. This year, the judge in the Mozote case ordered the government to open the military archives to continue the investigations, but the president refused to open them; Likewise, the case of the massacre carried out by the army in Rio Sumpul has been followed up, opening the investigation of the case and they have already begun the identification of some graves where they have found bones of some people who were murdered.

Bringing clean water to the communities of Chalatenango



The drinking water system was completed for three communities in the municipality of Chalatenango, this project has benefited 400 families from Las Minas, Los Alas and Las Lomas, the project consisted of the installation of pipes, the construction of two tanks, five tanquillas and the office for administration of the system,

CCR accompanied the entire organization process for the execution of the project, the formation of the water administration board and training on the administrative management of the system.

The execution of the second potable water project began in the Gramales community of the municipality of La Palma, where 42 families will benefit.

Strengthening of Relationships of Solidarity Between the Peoples

We want to make a special mention to the Sister relationships that despite the pandemic were in communication with their sister communities, supporting them and sending messages of hope, their contribution to youth development projects (study scholarships) was also very important, empowering women and supporting the strengthening of community organization.



This is the sixth year of the campaign planting trees to improve the environment and life of cooperative families, this year four thousand fruit and timber trees were planted in CONFRAS cooperatives with the support of the Tree Planting Foundation.

This project has allowed the planting of more than 50,000 trees some families are already harvesting and marketing the products and at the same time it has brought environmental education to families to children in more than 20 schools.

Attention to Emergencies in El Salvador and Honduras

El Salvador

Storms Amanda and Cristobal in May 2020

- 258 shelters with more than nine thousand people housed.
- 29,968 families affected.
- More than three thousand families lost their homes.
- Massive damage to roads, schools, bridges and gullies.
- Thousands of hectares of crops flooded.



Honduras Emergencies Hurricanes

Hurricanes Eta and Iota en Honduras The ETA and IOTA hurricanes that hit Honduras in November and December 2020 and with special damage in the northwestern area, especially in the Sula Valley, generated millions in losses in agriculture, road and electrical infrastructure, loss of homes and human lives.

In the Sula Valley, a diagnosis was made in **30** communities and **2,507** affected families were registered, **347** homes destroyed, and **28,276** lost acres of crops were quantified, which is equivalent to 13 million dollars. In the Aguán sector, corn, beans, cassava have been lost, especially in the San Pedro sector, the most affected by the hurricanes in that area, where 640 families with food needs, 700 damaged homes, among others. damage. In Intibucá, food insecurity is chronic and has worsened with the current crisis since it is one of the territories most neglected by the State and where the majority of the population is of the Lenca indigenous ethnic group.

We work together with the Reflection, Research and Communication Team (ERIC-SJ), San Isidro Labrador Parish, San Alonso Rodríguez Foundation, Coordinator of Popular Organizations of Aguán (COPA), Council of Indigenous Organizations and Peoples of Honduras (COPINH), the socio- educational program Paso a Paso, the Sisters of Mercy and the Sisters of Notre Dame, in support of the evacuation of families, care in shelters, promotion and education to avoid COVID infections, preparation of masks, feeding the affected families, etc.

In Eric and Radio Progress the alert state was activated since the beginning of the rains. The radio had special programming and an extra effort in coverage on social networks to inform what was happening in the neighborhoods and communities of the northwestern area.

Food Delivery



Manufacture Of Masks



Covid 19- Pandemic

We support health personnel in El Salvador with Personal Protective Equipment.

The mortality rate for doctors and health personnel in El Salvador was one of the highest on record. The government did not have the ability to allocate resources to support frontline personnel.

With the partner organizations: PROVIDA and the Salvador Allende Movement, different activities were developed:



Prevention

Mechanisms were created so that the population had access to health care and information to prevent protection from the virus.

An informative and psychological support campaign was developed for the population.

PRO -VIDA assigned a team of doctors to attend by tele- consultation and face-to-face visits if they were required.



-The campaign included the delivery of 3 kits according to needs:

-Cleaning kit, which included gel, masks, etc.

-Food kit, which were delivered to people in isolation and with very low economic resources

-Medication kit and laboratory tests if required.



More than 600 families were supported with food packages, cleaning kits, kits for the prevention of Covid 19.

The aid was delivered to communities in the south of La Libertad, San Vicente, Tacuba and Nejapa through the partners CRIPDES and PROVIDA.



Family members of health personnel who died from COVID, together with social organizations, request the government to recognize the contribution of front-line personnel in the fight against the pandemic.



Human Rights in Honduras

8 environmental defenders imprisoned for two years.

We have accompanied the campaign for the freedom of the Guapinol prisoners in their fight for the defense of the community’s resources and the defense of the environment.

A delegation from the United States visited the prisoners to show solidarity with their struggle and now they are accompanying their families denouncing the lack of democracy in Honduras.

So they express it “Our names are Porfirio Sorto Cedillo, José Avelino Cedillo, Orbin Naún Hernández, Kevin Alejandro Romero, Arnold Javier Aleman, Ever Alexander Cedillo, Daniel Márquez & Jeremías Martínez Díaz”.

“Together we have defended the rivers that originate in the Carlos Escaleras National Park in Honduras. We protested against the mining company Inversiones Los Pinares whose project in a protected area threatens water sources for our communities.



Actions Done

Falsely Accused

Protection and Defense

Actions done Humanitarian assistance, legal advice and support actions have been developed in the protection and defense of the human rights of the defenders of natural assets, which are detailed below:

Advocacy

- Support advocacy actions and criminal legal representation of defenders in arbitrary detention as a state-business retaliation for their work in defense of common and public property and having exercised the right to peaceful protest.

Familie

- Support the families of those deprived of liberty and defenders seriously threatened and at risk due to the legitimate exercise of social protest and defense of natural and public assets.

s Water

- Support people who are seriously threatened and at low risk due to their defense of human rights to water and a healthy environment in the municipality of Tocoa.

Other Activities to support Honduras:

The Eric Foundation in Honduras, along with other local organizations, gave direct assistance to the communities affected by hurricanes ETA & IOTA, traveling long distances and inaccessible roads. Through a campaign with friends from Honduras, we collected funds for the purchase of a vehicle to facilitate these activities.

We appreciate the donations made to Honduras for the purchase of a vehicle for the Eric Foundation.



INCOME & EXPENSES

| INCOME | Amount | % |
|--|----------------------|---------------|
| Foundation, Religious Orders, Grassroots, and others | \$ 374,211.29 | 49.91% |
| Individual Donors | \$ 375,516.98 | 50.09% |
| Total Income | \$ 749,728.27 | 100.0% |

| Expenses | Amount | % |
|-----------------------|---------------|--------|
| Administration | \$ 64,314.58 | 10.26% |
| Fundraising | \$ 79,842.28 | 12.74% |
| Programs and Projects | \$ 482,585.91 | 77.0% |

WE EXPRESS OUR DEEPEST GRATITUDE TO EACH OF OUR INDIVIDUAL SUPPORTERS. YOU MAKE OUR WORK POSSIBLE.

FOUNDATIONS, RELIGIOUS ORDERS, GRASSROOTS AND OTHER ENTITIES.

(Partial List)

Congregation of the Sisters Of St. Joseph Of Boston
 Congregation Of The Humility Of Mary
 Convent of the Sisters of St Joseph
 Dominican Sisters of Peace
 Dominican Sisters Grand Rapids
 Dominican Sisters Of Hope
 Dominican Sisters of Houston Texas
 Dominican Sisters Of Peace
 Dominican Sisters San Rafael
 Felician Sisters Of North America
 Franciscan Sisters of Allegany
 Franciscan Sisters of Perpetual Adoration
 Fruit Tree Planting Foundation
 Global Hunger Foundation
 Good Shepherd Catholic Church
 Interfaith Movement for Human Integrity
 Medtronic Foundation Volunteer Grant Program
 Order of Saint Benedict
 Philanthropic Ventures Foundation
 Presentation Sisters
 Renaissance Charitable Foundation Inc.
 Rosen Family Foundation Inc.
 Saint Aloysius Parish
 School Sisters of Notre Dame
 Sister Laetitia Bordes
 Sisters Of Charity Halifax
 Sisters Of Charity Of Cincinnati
 Sisters Of Charity of the Blessed Virgin Mary
 Sisters of Mercy
 Sisters Of Mercy Of The Americas
 Sisters Of Mercy West Midwest Community
 Sisters of Saint Joseph Our Lady of Perpetual Help Convent
 Sisters of St Joseph, of the Third Order of St Francis
 Sisters of St Francis of Mary Immaculate
 Sisters of St Francis of Tiffin, Ohio
 Sisters of St. Dominic

BOARD DIRECTORS

Locke Schultz Jaeger,
 President
 Rev. Jeff Johnson, Vice
 President
 Alexandra Aquino-Fike,
 Secretary
 Nicolas Avelar, Treasurer
 Jean Stokan, Community
 Organizer
 Gertrudis Mejia, Community
 Organizer
 Marina Vaquerano,
 Community Organizer
 Jose Artiga-Executive
 Director

ADVISORY BOARD

Miguel Aleman
 Amy Argenal
 Alejandro Artiga- Purcell
 Margi Clarke
 Diane Clyne
 Maria Silvia Guillen
 Madre Guadalupe Mejia
 Eileen Purcell
 Judy Swett

STAFF

Jose Artiga,
 Executive Director
 Isabel Hernandez
 El Salvador Office Director
 Graciela Lovo,
 Development Coordinator
 Claudia Martinez,
 Delegations Coordinator
 Anabell Lopez,
 Administrative & Program
 Assistant
 Monica Hernandez
 Administrative Support

Sisters Of St. Francis
Sisters Of St. Joseph Of Orange
Sisters Of St. Joseph Of Rochester Ministry Foundation, INC.
Sisters of the Presentation
Sisters of the Sacred Heart of Mary
Sisters, Servants of the Immaculate Heart of Mary
South Bay Sanctuary Covenant
Sisters of the Holy Family of Nazareth Divine Providence
St. Elizabeth Ann Seton Parish
St. Francis of Assisi Church
St. Rose Convent
St. Thomas More Newman Center
The Linehan Family Foundation
The Merrill Family Charitable Foundation, Inc.
The Paulist Center

Individual Donors (Partial List).

| | | |
|----------------------------------|-------------------|------------------------|
| Aaron Roberts | | Angie Lazo |
| Abbie Durham | | Anita Rubin Meiller |
| Abel Gallegos | Alvaro Cornejo | Ann and David Loretan |
| Abraham Torres | Aly Rahimali | Ann Fitzgerald |
| Ada Steenken | Alyssa Amaya | Ann Hopkins |
| Adam Kufeld | Alyssa Desiderio | Ann Legg |
| Adam Vela | Alyssa Matos | Ann Magill |
| Adbeel Lopez | Amanda D | Ann Scholz |
| Adnaa Warsame | Amanda DS | Ann Stehle |
| Adrian Marin | Amanda Espindola | Anna Brotherton |
| Adriel Jones | Amanda Mariscal | Anna Cassilly |
| Aelen Trujillo | Amanda Montiel | Anna F. |
| Agata Kwiecien | Amanda Morales | Anna Singleton |
| Agnes Klebe | Amanda Nguy | Annah Roberson |
| Aileen Craig | Amber Forsberg | Annastasia Reed Holme |
| Al Arroyo | Amira Ali | Anne Bluethenthal |
| Al Miralles | Amy Argenal | Anne Carrabino |
| Alan Dean | Amy Fulton | Anne Harvey |
| Alana Moronez | Amy Medrano | Anne Hoff |
| Alanna Burkhardt | Ana Amaya | Anne McCarthy, OSB |
| Alawna Cannon | Ana Menendez | Anne Schepers |
| Aleda Ahlgren | Ana Ramirez | Annette Schmidt |
| Alejandra Martinez | Ana Sol Gutierrez | Annika Mongan |
| Aleks Baker | Ana Varona | Anthony McGuire |
| | Anahi Estrada | |
| | Anahi Flores | |
| Alex and Eve Madonik and Weetser | Andrea Calderon | Antonio Nieto |
| Alexa Frankenberg | Andrea Glod | Aracely Portillo |
| Alexander Alas | Andrea Gonzalez | Arali Berumen |
| Alexander Wahn | Andrea Hellebuyck | Archie and Dianne Mill |
| Alexia Guglielmi | Andrea Scally | Arezo Abdul Jalil |

| | | |
|--------------------------------|-----------------------------------|-------------------------------|
| Alexander Alas | Andrea Gonzalez | Arali Berumen |
| Alexander Wahn | Andrea Hellebuyck | Archie and Dianne Mill |
| Alexia Guglielmi | Andrea Scally | Arezo Abdul Jalil |
| Alexia Zambrano | Andreina Vargas | Ariana Hernandez |
| Alexis Campbell | Andrew Brochetti | Arianna Castillo |
| Alexis Hernandez | Andrew Lash | Arlette Lugo |
| Alexus Williams | Andria Cantrell | Armando Avelar |
| Aleyda Ramos | Anelise Del Vecchio | Aryamda Colin |
| Ali Bana | Angel Zelaya | Ash Krishna |
| Ali Fujiyoshi | Angela and William Arauz-Castillo | Ash Rose |
| Alice and Richard McGinnis | Angela and William Breakey | Ash Tandoc |
| Alicia Cadotte | Angela De Jesus | ashley Alvarez |
| Alisa De La Torre | Angela Galdamez | Ashley Castillo |
| Allan Fisher | Angela Garcia | Ashley Flores |
| Allison Tanner | Angela Polanco | Ashley Lira |
| Allyson Howard | Angelle Vilches | Ashley Momoh |
| Alston Watson | Angie Alas | Ashley Perez Hernande |
| Ashtyn Aviles | Bonita Thomas | carol Lang |
| Astrid Duenas | Brandon Baquera | Carol Stoecklin |
| Astrid Santos | Brandon Oroxon | Carol Zinn |
| August T. | Brec Hipolito | Carolina Martell |
| Aurelia Samaniego | Brenda Benitez | Carolina Siliezar |
| Aurore Bonnet | Brenda Guzman | Caroline and Steve Lehman |
| Avery Lee | Brenda Lovo | Caroline Everts |
| Azaria Pickett | Brenda Vaca | Caroline Olives |
| Azucena Turcios | Brian Torres | Carolyn Blum |
| Bahveena Kes | Brianna Chavez | Carroll & Joseph Clay |
| Barbara & Peter Haack | Brianna Lindsey Vaughn | Cassandra Keddy |
| Barbara Crook | Brigid Dunne | Castiel Moore |
| Barbara DiTommaso | Brisa Diaz | Cat Gee |
| Barbara Evans & Lee M. Seabolt | Briseida Cabrera | Catalina Gonzalez |
| Barbara Fichtenberg | Brisia Bran | Catherine Cox |
| Barbara Katz | Britney Avelar | Catherine Logie |
| Barbara Speedling | Brittany Arteaga | Catherine Personius |
| Barbara Thomalla | Brittany Wilhelm | Catherine Resendes |
| Barbara Zimmer | Brock Hanson | Catherine Rield |
| Barry Fike | Bruce Bachmann | Caya Tanski |
| Bashirat Oladele | Bryan Magaña Garcia | Ceara Harper |
| Beatrix Wicks | Bryan Zamores | Cecile Roeger |
| Becca Neese | Bryce Banks | Cecilia Mathews |
| Belen BuenRostro | C. Fial | Cecilia Rochin |
| Bella Dellinger | C. Green | Celina Benitez |
| Benjamin Gemmel | C. Jean Loria | Chah Ali |
| Benjamin Michaels | Caitlin Crutcher | chantelle Fauteux |
| Benjamin Osoba | Caitlin Wagner Olivo | Charlaine McAnany |
| Bernadette Ballasty | Cal Allen | Charles and Jacqueline Konkol |

| | | |
|------------------------------------|--------------------------------|---------------------------------|
| Bernadette Ballasty | Cal Allen | Charles and Jacqueline Konkol |
| Bertram Strieb | Cameron Ballard | Charles Byrne |
| Beth Hammer | Camila Fernandez | Charles Callman |
| Bethany Renata Loberg | Camille Cintas | Charles French |
| Betty Lucas Jackins | Camille Dominguez | Charles Johnson |
| Bianca Garcia | Carl Bice | Charles L. Conlon |
| Bianca Jimenez | Carla Funes | Charles Michaels |
| Bianca Lopez | Carlos Campos | Charles Phillips |
| Bianca Ramirez | Carlos Polanco | Charles Vela |
| Bianca Zelaya | Carlos Rivera | Charlyne Mendez |
| Billy and Roberta McDonald Brooks | Carlos Salazar | Cheryl Eccles |
| Blake Brooks | Carmen Flores | Chloe Hervet |
| Blanca Miranda | Carmen Maciel | Chloe Steck |
| Bob Melia | Carol Barton | Chris & Buffy Maple |
| Bob Morse | Carol Elsholz | Chris Boesel |
| Chris Cunnie | Dakotah Weese | Deysi Garcia |
| Chris Laddish | Dale Langland | Diana Bello |
| Christian Canales | Dan and Sally Natchek | Diana and Ken Agosta and Wessel |
| Christian Dubon | Dan Lee | Diana Bohn |
| Christian Pokrzywnicki | Danelle Bennette | Diana Figueroa |
| Christina Courtright | Dani Viniachi | Diana Guelespe |
| Christina Tegrotenhuis | Daniel Amaya | Diana Magaña |
| Christine Beckett | DANiel and Sharon Hunter Smith | Diana Melgar |
| Christine Jaimes | Daniel Eiben | Diana Pineda |
| Christine Nadeau | Daniel Prima and Sandy Bauer | Diane Brody |
| Christopher & Rhoda Holabird | Daniel Tormey | Diane Clyne |
| Christopher and Vassie Lloyd | Daniela Hernandez | Diane Lent |
| Christopher Chen | Daniela Mercado | Diane Morrison |
| Christopher Nauman | Daniela Morataya | Diane Roche |
| Cindy Gomez | Daniela Mutis | Diane Smith |
| Cindy Mejia | Daniela Ventura | Diane Suhler |
| Cindy Vargas | Darius Squire | Diane Wilson |
| Claudia Horwitz | Darla Crespin | Dixy Melendez |
| Claudia Rodriguez | Darlene Ceremello | Don Hermes |
| Clayton Campos | David Brookbank | Dona Teplitz |
| Clyde & Karen Horton | David Contreras | Donald and Ruth Smith |
| Colleen McGinnity | David Farley | Donald Christensen |
| Collier Hands | David Fike | Donald McClain |
| Collin & Patsy Bangs & Plaggemeyer | David Garcia | Donna Duensting |
| Connie Saldana | David Giron | Donna Seid |
| Constance Chiba | David Mickiewicz | Donna Villareal |
| Cora Barnes | David Pineda | Dorothy Escobar |
| Courtney Harper | David Sylvester | Dottie Mathews |
| Craccbaby Aggie | David Wytock | Douglas & Gisela Daetz |
| Crisol Ruvio | Daysi Funes | Douglas Cramer |
| Cristian Cruz | Dc Mike Lozzo | Douglas Galdamez |

| | | |
|---------------------------|-----------------------------|------------------------------------|
| Cristian Flores | Debora De Souza | Douglas Gald |
| Cristina Pineda | Deborah Bayer | Èddie Guerrero |
| Cristina Traina | Deborah Lee | Edie Mesick |
| Cristy Lopez | Debra Sheetz | |
| Cynthia Barrios | Dee A | Eduardo Carreño |
| Cynthia Ficker | Deeja Ray | Edward Copeland |
| Cynthia Kellogg | Delia Amaya Rodriguez | Edward Morman |
| Cynthia Robertson | Denae Livingston | Eileen Altman |
| DaiShawn Battle | Denis Ducey | Eileen Dunn |
| Daisy Hernandez | Desiree Serratti Orellana | Eileen Horne |
| Daisy Lopez | Destiny Marter | Eileen Purcell & Jose Artiga |
| Daisy Peraza | Destyne Peppard | Eileen Valle Garcia |
| Elaine Goldman | Erna Smeets | Gary Williams |
| Elaine Hollis | Esmeralda Rangel | Gaston & Noreen Cadieux & Kerrigan |
| Elena Cheung | Esmeralda Valenzuela | Geertruida Veldman |
| Elena Ramirez | Esper Cisneros | Gene Knaff |
| Elias Duran | Esther Plefka | Genesis Galdamez |
| Elinor Jordan | Ethan Hernandez | Genesis Genesis |
| Elisa Carrillo | Eva Bonime | George & Mary Van Antwerp |
| Elisabeth Jay | Eva Orbuch | George Hutchinson |
| Elizabeth de Bord | Evely Shlensky | Gerald Dalzell |
| Elizabeth G. | Evelyn Dunne | Geri Botyrius |
| Elizabeth Gomez | Evelyn Huynh | Gerrit Stover |
| Elizabeth Groome | Evelyn Stern | Gina Miller |
| Elizabeth Hanna | Evrett and Clara Kalin | Ginger Holman |
| Elizabeth Hansen | Fabricio Martinez | Ginny Mellor |
| Elizabeth Morgan | Fatima Alvarenga | Glenda Pawsey |
| Elizabeth Reifsnider | Flavia Setiajita | Gloria Wiley |
| Elizabeth Sanchez | Flor Gonzalez | Gonzalo Rocha |
| Elliot Bernold | Flora Schultz | Gracie Wright |
| Elmer Melendez | Flora Smith | Graciela Lovo |
| Elody Dang | Frances A | Graciela Guardado |
| Elsa Gibson | Frances Diaz | Gregg roote |
| Elyes Toumi | Francine Freitas | Gregory Driotez |
| Emely Estrada | Francine Wickes | Gretchen Hamilton |
| Emely Morales | Franki Hooks | Griffin Barker |
| Emilio Ferral | Fred & Margo Ross& Feinberg | Grissell Bernal |
| Emily Caldwell | Fred & Phyllis Schoen | Guadalupe Piceno |
| Emily Corral | Fred Kopatich | Guillermo Moran |
| Emily Phoeuth | Fred Ross | Gustavo Soberano |
| Emily Thomas | Freddie Salazar | Gjuvenile Clothing |
| Emma Cates | Frederick and Eileen Ahearn | Guy Herman |
| Emma Hoffman | Gabby Villalobos | Gwendolyn Watson |
| Emmanuel and Kerry Crabbe | Gabriel Makhlof | Hajra Rasheed |
| Eneli Valencia | Gabriel Salazar | Hajrah Malik |
| Enrique Sanchez | Gabriela H. | Haley Tetzlaff |
| | | Hannah Davis |

| | | |
|----------------------------------|------------------------------|-----------------------------|
| Eric Amador | Gabriela H. | Hannah Davis |
| Eric Lynch | Gabriela Vicente | Hannah Hoang |
| Eric Schockman | Gabriella Tristan | Hans Chou |
| Erica Valle | Gabrielle Argueta | Harold & Lorraine Panciera |
| Erich Schimps | Gail Murray | Harold Hodes |
| Erick Espinal | Gail Presbey | Haylei Duran |
| Ericka Artola | Gail Smith | Helen Duffy |
| Erika Funes | Gala King | Helen Ortmann |
| Erika Hernandez | Gary & Charlotte Quirk& Haas | Helen Purcell |
| Helen Rogers | Gary Cozette | Jenny Hernandez |
| Helen Stigant | Janet Rubio | Jenny McCarthy |
| Helen Umaña | Janet Seybolod | Jeremy Gomez |
| Helen Wacber | Janice Lara | Jericho Naranjo |
| Helen Wharton | Janice Valder | Jerry Lionetti |
| Helena Katz | Janiece Williams | Jessi Nuñez |
| Henrietta Griffiths | Jaquelin Argueta | Jessica De la Cruz |
| Henry Atkins J | Jasmine Ciudad | Jessica Farber |
| Herb-Dorie Behrstock | Jasmine Esquivel | Jessica Jenkins |
| Hodan Ali Mohamed | Jasmine Lopez | Jessica Lucha |
| Holly Ayala | Jason Martinez | Jessica Masey |
| Holly Harwood | Jason Miller | Jessica Okoro |
| Hunter Poarch | Jax Apollo | Jessica Perez |
| Ian Trefethen | Jayanthi Reddy | Jessica Rabenold |
| Irene Aguilar | Jaylene Muñoz | Jeydy Rodriguez |
| Irene Avila | Jazmin Cruz | Jim & Margaret Destaebler |
| Iris Biblowitz | Jazmin Gonzalez | Jimmy Martinez |
| Irma Umanzor | Jazmine Banegas | Jizelle Rodriguez |
| Isabel Nogueira | Jean Stokan and Scott Wright | Joan Adams |
| Isabella Dodd | Jeanette Hagelskamp | Joan Calderera & John Bloom |
| Isabella Hernandez | Jeanne Arc | Joan Connolly |
| Isamar Barragan | Jeanne Dowd | Joan Dawber |
| Issac Rojas | Jeanne Kies | Joan Hill |
| J. David Follett | Jeanne Moore | Joan Javier Duval |
| Jack S Kelly | Jeannie Anderson-West | Joan Lefkowitz |
| Jackie Dubil | Jeff Robinson | Joan Redding |
| Jackie Van Anda | Jeffrey Fuentes | Joanne Katzen |
| Jackie Zipiain | Jeffrey Robinson | Jocelyn Quinteros |
| Jacqueline Alvarenga | Jemmy Turcios | Jocelynn Ramos |
| Jada McBeth | Jen Gonzalez | Joclyn Palucho |
| Jaidyn Mclean | Jenn Contreras | Jody Rymaszewski |
| Jai-Laan Blackmon | Jenna Fortino | Joel Romero |
| James and Jeanne Degel | Jenna Morales | Joey Rodriguez |
| James and Tammy L. Watanabe Hall | Jennifer Amaya | Johanna Cifuentes |
| James Burchfield | Jennifer Bautista | Johanna Hernandez |
| Jamie Camales | Jennifer Dang | Johanna Rickl |
| | Jennifer Gee | |

| | | |
|-----------------------------------|-----------------------------------|-------------------------------|
| Jamie Swartz | Jennifer McGovern & Steven Unruhe | John & Peggy Ahlback |
| Jan Thompson | Jennifer Navarrete | John & Sylvia Melrose |
| Jan Treecraft | Jennifer Sanchez | John and Connie Marty |
| Jane DeLashmutt | Jennifer Spear O'Mara | John and Marcella Welch |
| Janelle Gayle | Jennifer Tzaquitzal | John Doyle |
| Janet and John Corpus & Hoffmeyer | Jennifer Valdez | John Edberg |
| Janet McLaughlin | Jennifer Yanez | John Fries |
| John Mcsweeney | Julia Escalante | Katherine Gerlich |
| John Pollack | Julia Romero | Katherine Gibson |
| John Romano | Julia Williams | Katherine Hamilton OP |
| John Stewart | Juliana Chicas | Katherine Moreno |
| John Walsh | Julie Beutel | Katherine Valiente |
| John Zokovitch | Julie Charette | Katherine Velasquez |
| Jon Williams | Julie Cutter | Katherinne Lara |
| Jonathan Evans | Julie Erickson | Katheryne Cortes |
| Jonathan Howland | Julie Litwin | Kathleen Duffy |
| Jonathan Kimmel | Julio A. Franco | Kathleen Erickson |
| Jonathan McNabb | Jullian Riera | Kathleen Holmay |
| Jonathan Pineda | Justin Elson | Kathleen McTigue |
| Jordan Crawford | Juvenal Torres | Kathleen OConnell |
| Jordan Heikkinen | Kacy Gilliam | Kathryn and Gus Kasch Newport |
| Jordi Flores | Kai Jacobs | Kathryn Ford |
| Jorge Campos | Kaitlyn Tran | Kathryn Johnson |
| Jorge Moreno | Karen Alschuler | Kathy Brasil |
| Jorge Popoca Santana | Karen Betancourth | Kathy Curran |
| Jorge Ramirez | Karen Connor | Katie Ayala |
| Jorg-Heinrich Wild | Karen Coreas | Katy Digby |
| Jose Martinez | Karen Dietzen | Kawena Smith |
| Jose Michel | Karen Erlander | Kay Conroy |
| Josefina Beecher | Karen McLoughlin | Kayla Privado |
| Joselyne Sanchez | Karen Mendoza | Kaytie Romero |
| Joseph & Antoinette Betz | Karen Murphy | Kaytlyn Rivas |
| Joseph Palen | Karen Musalo | Keeks Fuller |
| Josephine Cortez | Karen Skold | Keila Portillo |
| Josh Tucker | Karin Ashley | Kelly Chamberlain |
| Josh Whinston | Karina Chavez-Saravia | Kelly Kingdon |
| Joyce E. Romano | Karina Torres | Kendra Bree |
| Joyce Elomo | Karina Villatoro | Kenneth & Barbara Neuberger |
| Joyce hollyday | Karla Cativo | Kenneth Baumann |
| Joyce Thap | Karyn Barry | Kenneth Jones |
| Joyce W. Hubbard | Kasey Fracica | Kenzie Power |
| Juan Martinez | Kassy Jimenez | Kerry McLaughlin |
| Juan Pedro Gaffney | Kate Bocassi | Kerry Rowland |
| Judith Almaraz | Kate Carter | Kevin and Maria Boden |
| Judith Barrera | Kate Lorenzen | Kevin Mckinnon |
| Judith Kullberg | Kate Ott | Kevin Paz Ramos |

| | | |
|--------------------------|-----------------------------------|----------------------------------|
| Judith Swett | Kate Theodore | Kiara G. |
| Judith Timmel | Kate Tranquada | Kiley Nelson |
| Judith Warnke | Katelyn Hernandez | Kim Thompson |
| Judy Manton | Katheleen Kennedy | Kimberly Daubman |
| Kimberly Dominguez | Lilian Martinez | Maggie Butler |
| Kimberly Edwards | Lilian Needham | Maia Bandera |
| Kimberly Franco | Liliana Delgado | Malena Maharjan |
| Kimberly Fuentes | Liliana Martinez | Manuel Perez Rocha |
| Kimberly Krone | Liliana Torres | Marangelis Uben |
| Kimberly Mora | Lillian Castillo | Marcela Bumpus |
| kimberly Rodela | Lillian Duran | Marcus Christian Hansen |
| Klaus & Joel Schmiegel | Lina Williams | Margaret and Lee Zeigler |
| Krissia Flores | Linda Joost | Margaret Bowerman |
| Krissia Solis | Linda Koch | Margaret Briggs |
| Krista Dajay | Linda Sturgeon | Margaret Green |
| Kristen Kane | Lindsay Christensen | Margaret Holtzman |
| Kristi Soutar | Linh Tran | Margaret M Curtin |
| Kristina Poon | Linnea Akerstrom | Margaret Miros |
| Lance Laver | Lisa Hirsch | Margaret Sanchez |
| Lanee Q | Lissbeth Bayona | Margaret Yardley |
| Larelle Jones | Lissette Contreras-Johnson | Margie Clarke & Matt Nichols |
| Larissa Hernandez | Lissette Coreas | Mari Santos |
| Larissa Pineda | Livia Fitzgerald | Maria Alicia Mendoza |
| Larry and Linda Anderson | Locke Jaeger | Maria Abrego |
| Larry Anderson | Loida Navas | Maria Casado |
| Laura Bocanegra | Lora & Greg Bennett & Anacker | Maria Jimenez |
| Laura Gilman | Loretta Jordon | Maria Kellner |
| Laura Hawkins | Loretta Nekota | Maria Lara |
| Laura Urioste | Loretta Schaff | Maria Orlandini |
| Laura Velez | Lori Montenegro | Maria Zeimen |
| Lauren Maza | Lorraine Heller | Marianne Callahan |
| Laurie Goodrow | Louise Edwards | Marianne Comfort |
| Lawrence Couch | Louise Fortmann | Marie Cantino |
| Leo Moncada | Louise Rankin | Marie Dennis |
| Leona Wieland | Louren Lopez | Marie DesJarlais |
| Leonardo Horta | Lowell Waxman | Marie Lucey |
| Leonor Guzman | Lucy and Faith Williams and Perry | Marie Therese Summers |
| Leonora Nuñez | Lucy Reid | Marija Petrova |
| Leslie Alfaro | Lujayn Ismaiel | Marilu Hernandez |
| Leslie Castilleja | Lupita Padilla | Marilyn Catherine Gottemoeller |
| Leslie Rabine | Luz Mena | Marilyn Hagedorn |
| Leslie Recinos | Lyle & Marian Van Vleet | Marilyn&Robert Chilcote&Mckenzie |
| Leslie Rivas | Lyndon Porter | Marina Carbo |
| Leslie Weiss | M. Thommes | Mario Cisneros |
| Lexi White | Maddie Postlethwaite | Mario Zelaya |
| Li Badian | Madeleine Kirkconnell | Marisa Avelar |

| | | |
|--------------------------|----------------------------------|---------------------------------|
| Lili Shidlovski | Madeline Labriola | Mark and Stacey Maus and Picard |
| Mark Coplan | MaryLouise Chesley-Cora | Michael Segeritz |
| Mark Fisher | Mateo Steckel | Michela Lanfranchi |
| Marlene Zebleckis | Matthew Head | Michelle Mejia |
| Marleny Montano | Maureen | Michelle Reddonnet |
| Martha and Phillip Smith | Maureen Foltz | Michelle Shortt |
| Martha Segovia | Maureen Sheahan | Mickey Sperlich |
| Martha Simms | Maureen Wild | Mieke Van Hout |
| Martin and Grace Carr | Mauricio Diaz | Miggs Perez |
| Martin Foley | Mauricio Hernandez | Miguel Govea |
| Martin Gleason | Maya C | Miguel H. |
| Martin Lepkowski | Maya Gonzalez | Mike Weatherl |
| Martina Filerio | Maya Smith | Minael Shahzadi |
| Mary A. Perrone | Maya Ulloa Charbonneau | Minette Kwok |
| Mary Abdo | Mayra Flores | Mirtha Ninayahuar |
| Mary Beth Vender | Mayra Soto | Mitch Kahn |
| Mary Black CSJ | Mayte Carrillo | Molly and Charles Fumia |
| Mary Bland | Maytte Colorado | Mona Qrib |
| Mary Catherine Bunting | Meg Remple | Monica Calderon |
| Mary Connor | Megan Davies | Monica Cruz |
| Mary Dellefield | Melanie A | Monica Iniguez |
| Mary Ellen Brody | Melanie Hernandez | Monica Kim |
| Mary Gorder | Melanie Torres | Monica Tovar |
| Mary Grasing | Melba Muñoz | Monica Ventura |
| Mary Hughes OP | Melinda and Charles Haag Fanning | Montserrat Ponce Parra |
| Mary Jean Davidge | Melissa abriz | Morgan Hough |
| Mary Kozmik | Melissa Vega | Mrinaalika Sivakumar |
| Mary McCann SAnchez | Melissa Vida | Muriel Orihuela |
| Mary McCauley | Melody Shank | Myia Morales |
| Mary McKeighan | Melvin Escobar | Mylan Jones |
| Mary Mullady | Mercy Hume | Myles Hebert |
| Mary Murphy | Meriile Robertson | Nafisa Millat |
| Mary Phelan | Meryl Baxter | Nancy Oetter |
| Mary Rita Weschler | Mia Amil | Nancy Stockford |
| Mary Rowe | Mia Ippolito | Nancy Sylverster |
| Mary Shank | Michael & Carolina Manning& R. | Nancy Vega |
| Mary Slicher | Michael & Julia Brinkmann | Naomi Young |
| Mary Starszak | Michael & Lynn Moore& Bollinger | Nassim Debbah |
| Mary Yelenick | Michael & Mary Kay Dedrick& F. | Natali Calderon |
| Maryann Enright | Michael and Rita Murphy | Natalie Lopatinsky |
| MaryAnn Erdtmann | Michael Grimm | Natalie Trujillo |
| Maryann Ruzzo | Michael MCGarry | Nataly Villalobos |
| Maryjane Westra | Michael Poulin | Nathalia Moran |
| Marylee King | Michael Samuel | Nathan Davies |

| | | |
|---------------------------------|--------------------------------|---------------------------|
| Nathanael Rivera | Patricia Safavi | Randy Moreno |
| Nattaly Aristondo | Patricia Siemen, OP | Ravyn Jackson |
| Nehemiah Elias | Patrick Mahan | Raylene Gee |
| Nelitza Gutierrez | Patrick Nau | Rebecca Kahlenberg |
| Nelson Reyes | Paul and Tiffany Cleary | Rebecca Pineda |
| Nelson Vasquez | Paul Collins | Rebekka Bech |
| Nephtalye Vargas | Paul Hanson | Reede Stockton |
| Nestor Castillo | Paul Kendall & Sharon Rives | Regina Cano |
| Nezihe Yay | Paul Peña III | Regina Mendoza |
| Nicholas Mohr | Paul Sampson | Renee Evans |
| Nick Williams | Paul Swett | Renee Fredrickson |
| Nicole Mellow | Paulina Carranza | Renny Golden |
| Nicole Partington | Paulina Guerrero | Reynold Frutkin |
| Nicole Vela | Perla Caro | Riane Hunt |
| Nikka Timog | Perla Rodriguez | Ricardo & Elena Calderon |
| Nina and Johnson, Kenneth Grove | Peter and Gail Mott | Ricardo Huete |
| Nina Posner | Peter Lund | Richard & Claudia Wilcomb |
| Nina Schonfelder | Peter Mihaly | Richard Bondi |
| Noa Fisher | Peter Robinson | Richard Friedberg |
| Noah Castillo | Phil and Donna Alcocer Fleming | Richard Hobbs |
| Noemi Rodriguez | Phil Fisher | Richard Klotz |
| Nora Hamilton | Phil Neff | Richard Mcgee |
| Nuri Colin | Phyllis Grady | Richard Stahler Sholk |
| Odassis Thomas | Phyllis Jepson | Rick Thompson |
| Oliver & Helen Mag Wolcott | Phyllis Tierney | Rita Specht |
| Oliwia Eustacchi | Phyllis Zimmer | Robert & Joy Johnson |
| Orion Baker | Pia & Bob Moriarty | Robert Byrne |
| Oscar Guerrero | Priyanka Bajaj | Robert Jones |
| Pa Chi Vue | Quinn John | Robert Nixon |
| Pamela Cobey | R. Barrett & Barbara Noone | Robert Spear Ttee |
| Pamela Coxon | Rachel Alschuler | Robert Ward |
| Pamela Shepherd | Rachel Kim | Roberto Jaimes |
| Paola Euceda | Rachel Pagel | Rochelle Tong |
| Pat Kramer | Rachel Ramirez | Rodger Scott |
| Pat Prunty | Rael Clervoix | Roger Nuñez |
| Patricia & James Fidler | Raelen Watkins | Ron Moe Lobeda |
| Patricia Campos Medina | Raghda Naji | Ronald Bogin |
| Patricia Cosgrove | Raina Wolfe Stein | Ronald Cruz |
| Patricia Flore s | Ralph & Lory Robers | Ronald Kresge |
| Patricia Keefe | Ramya Kuppa | Ronald Rentner |
| Patricia Padilla | Randal and Janis McDonald | Rosalind Hudgens |
| Patricia Prieto | Randy Chavez | Rosemarie Diaz |
| Patricia Purcell | Randy Higgins | Rosemary Brennan |

| | | |
|-------------------------------|-----------------------------------|------------------------------------|
| Rosemary Coffey | Sharon Olmos | Susan Campos |
| Rosemary Galdamez | Sharon Rose | Susan Finnegan |
| Rosemary Garza | Sharon Stanley Rea | Susan Fox |
| Rosemary Mangan | Sheila Brady | Susan Kadota |
| Rosy Reyes | Sherrill Hogen | Susan Peña |
| Rudy Ortiz | Sherry Larsen Beville | Susan&Thomas Fleming |
| Ruth Anderson | Sheryl Au | Suzanna Stinnett |
| Ruth Capelle | Sheryl Rick | Suzanne and John Clark |
| Ruth Ford | Sidney Lu | Suzanne and Robert Llewellyn Spear |
| Ruth Kalin | Sidrah Khan | Suzanne Bottelli |
| Ruth MacNaughton | Sierra Rahusaar Detlor | Suzanne Sattler |
| Ruth McCauley | Sierra Scanlan | Suzanne Spaulding |
| Ryan Ortiz | Silvia Amaya | Suzette Allaire |
| Sally Ortiz | Sinay Moros | Sydney Lustig |
| Sam Frias | Sister Carla Kovack | Sylene Garcia |
| Samantha Haines | Sister Harrington | Sylvia Rosales |
| Samantha Reyes | Sr. Cecilia Hudec | Sylvia Swanke |
| Samantha Saavedra | Sr. Henke OSM | Tabitha Grasing |
| Sandra Yeo | Sr. Kathleen Maria Mitchell, FSPA | Talia Sidell Garcia |
| Sara Alameddine | Stacey Hucknall | Tami Boulet |
| Sara Campos | Stan & Cathy Rezendes | Tan PX |
| Sara Wilson | Stanley Desius | Tania Escalante |
| Sarah and Samuel Berg and Tia | Star Alvarado | Tania Escobar |
| Sarah Clark | Stefany Mejia | Tania Stokes |
| Sarah Cox | Stefany Zafra | Tanner Gulan |
| Sarah Mundal | Steffi Ann Campos | Tatiana Esquivel |
| Sarah Oringat | Stephanie & Jose Mauricio Burgos | Tatiana Whitlow |
| Sarah Rosland | Stephanie Carrin | Taylor Ellis |
| Sarah Vanegas | Stephanie Chavez | Taylor Nakatsuka |
| Sarah Xing | Stephanie Mancia | Ted Conwell |
| Satchi Salubre | Stephanie Molina | Teresa & Robert Riley |
| Savannah Landau | Stephanie Rios | Teresa Carlos |
| Scott Mehlenbacher | Stephanie Serrano | Teresa Chin |
| Scott Quinn | Stephanie Thomas | Tesha Urban |
| Sean Murphy | Stephany Lepe | Tessa R. Callejo |
| Selene Aitken | Stephen Mumme | Theo Rigby |
| Selina Tesfandrias | Stephen Tinguely | Theresa Cameranesi |
| Serina Huang | Steve and Christine Clemens | Theresa Hernandez |
| Shamim Namatovu | Steven & Laurel Chessin | Theresa Sandok |
| Shania Castillo | Steven Rudnick | Therese and Harold Beers |
| Shannon Engeland | Stu Maple | Therese Randolph |
| Sharon Cargo | Stuart Dreyfus | Thomas & Margaret Hoarty |
| Sharon Miller | Susan Langin Stuart | Thomas Howarth |

Tim & Wanda

Joseph Tim

Carol Windrum

Timothy Gollob

Todd Robertson

Tom Gumbleton

Tomas Bulux

Tosin Oyewole

Tracey Schear

Tracy Lopez

Tyler Hohenstein

Valeria Caceres

Valeria Lewandoski

Valeria Yepez

Vanessa Cabrera

Vanessa Cruz

Vanessa De Robles

Vanessa Garcia

Vanessa Martinez

Vanessa Salgado

Veronica Diaz

W.Scott

Veronica Roche

Veronica Schweyen

Veronica Smith

Veronica Vela

Vicki Winters

Vicky Heavenfire

Vicky Van

Victor Jimenez

Victor Salgado

Victor Umaña

Victor Velazquez

Victoria Everett

Victoria Steinitz

Vince Love

Vincent and Mary Stanton

Virginia De Jesus

Virginia DuVall

Virginia Weingate

Vivian Dillard

Vivian Zelaya